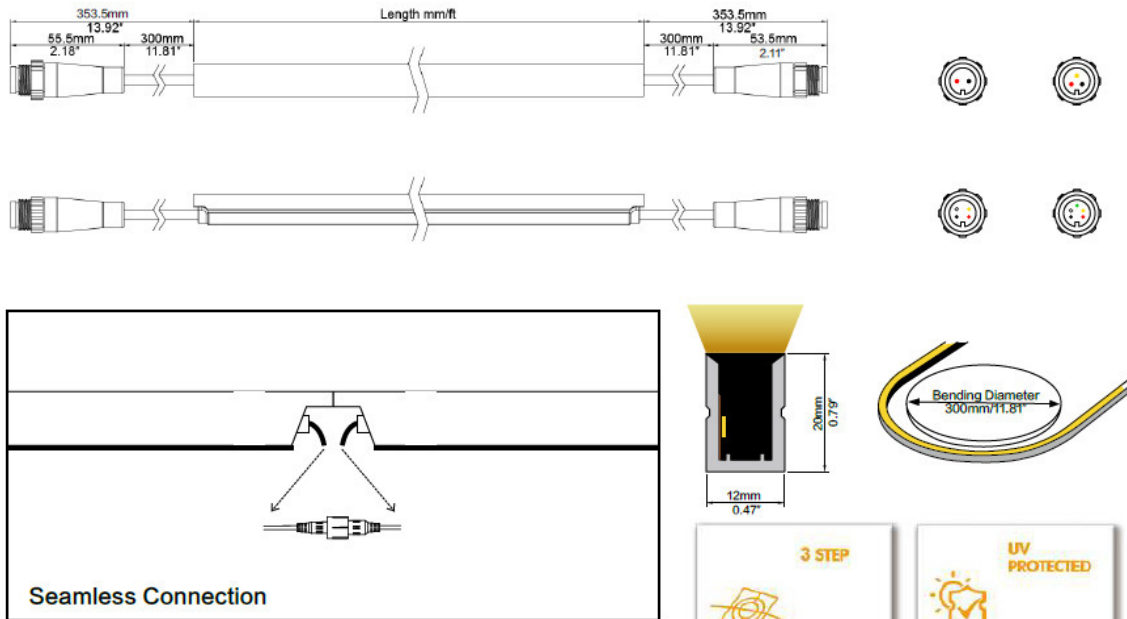




Linear Flex TOP, DC24V, has bending direction horizontally with radius of 150mm (5.9") and across section size: 12mm*20mm/0.47"x 0.79" (W*H). It is IP68 protection, UV resistant and saltwater resistant via opal polyurethane coating. 3-Step Mac Adam bin and dot free will bring the most excellent performance for indoor-outdoor Application.

DIMENSION

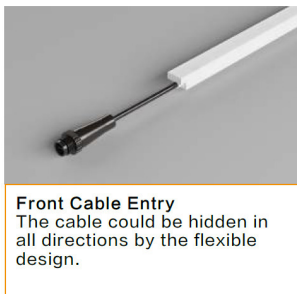


Electrical data

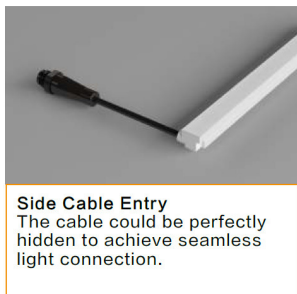
Voltage	DC24V (23.5Vmin, 24.5Vmax)
LED PIN Temperature	Max. 65°C / 149°F
Storage Temperature	-25°C / -13°Fmin, 60°C / 140°Fmax
Ambient Temperature	T _{min} = -2°C / -13°F, T _{max} (Table below)
CRI	Ra80/ Ra90 optional

LINERAR FLEX TOP	Low output	Mid output	High output
Power (W/m W/ft)	5/1.5	10/3.1	15/4.6
Efficacy (lm/W) @4000K	66	64	63
Max. Ambient temp. (T _{max})	50°C / 122°F	45°C / 113°F	35°C / 95°F

VARIOUS CONNECTIONS



Front Cable Entry
The cable could be hidden in all directions by the flexible design.



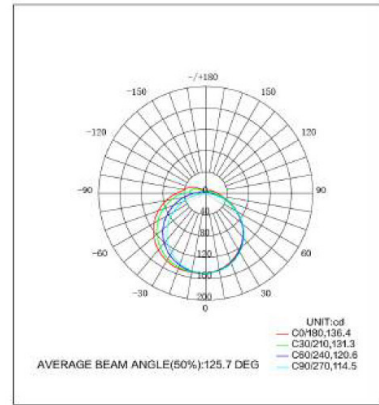
Side Cable Entry
The cable could be perfectly hidden to achieve seamless light connection.



Bottom Cable Entry
The cable could be perfectly hidden to achieve seamless light connection.

1. It is available in PRO/ADV version.
2. IP68= Full coating. TÜV IP68 certification could be provided.
3. Due to the tolerances of the production and electrical components, output values and electrical power can vary up to 10%.

	5W (low output)		10W (mid output)		15W (high output)			
	CCT	Lm/m	Max. run length	Lm/m	Max. run length	Lm/m	Max. run length	Unit cut
	2700K	314	21M	610	13M	906	10M	41.666
	3000K	324	21M	630	13M	936	10M	41.666
	3200K	324	21M	630	13M	936	10M	41.666
	3500K	324	21M	630	13M	936	10M	41.666
	4000K	330	21M	640	13M	950	10M	41.666
	5000K	330	21M	640	13M	950	10M	41.666
	6500K	330	21M	640	13M	950	10M	41.666
	T.W	337	8M	654	5M	952	3M	50
	W W	173	8M	334	5M	486	3M	50
	C W	169	8M	338	5M	492	3M	50
	Red	94	21M	182	13M	265	10M	41.666
	Green	181	21M	352	13M	476	10M	41.666
	Blue	43	21M	84	13M	114	10M	41.666
	Amber	94	21M	183	13M	267	10M	41.666
	Pink	131	21M	254	13M	370	10M	41.666
	RGB	121	8M	235	5M	342	3M	71.429
	RGBW	264	8M	512	5M	746	3M	71.429
	W832	159	8M	309	5M	450	3M	71.429
	W840	169	8M	328	5M	478	3M	71.429
	W865	169	8M	328	5M	478	3M	71.429



3000K IES File

1. T. W= Tunable White, W832= RGB+W3200K, Ra80.
2. Max. run length refers to single side feed in serial connection.
3. The given color temperature is the strip (after coating) color temperature.
4. The given data are typical values due to the tolerances of the production process and the electrical components, values for light output and electrical power can vary up to 10%.
5. It is no IK-Rated, please don't walk on it without protection.3. The given color temperature is the strip (after coating) color temperature

VARIOUS CONNECTIONS



Front Cable Entry
The cable could be hidden in all directions by the flexible design.



Side Cable Entry
The cable could be perfectly hidden to achieve seamless light connection.



Bottom Cable Entry
The cable could be perfectly hidden to achieve seamless light connection.

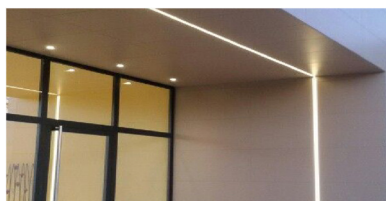
4. It is available in PRO/ADV version.
5. IP68= Full coating. TÜV IP68 certification could be provided.
6. Due to the tolerances of the production and electrical components, output values and electrical power can vary up to 10%.

APPLICATIONS



The Linear Flex Side can be both shaped and straight illumination. You could achieve shape decoration with clips, while the straight one with profile. There are different lengths available, you could cut it by yourselves or customize length are available.

High quality IP68 connectors for various applications, but if you'd like to install under water, please make sure the connector or cable connection is out of water. The homogeneous light is getting more and more popular thanks to its appealing line. Meantime, you will benefit from its outdoor robust durability for **"fit and forget"**.



The Linear Flex Side IP68 could be well used in your outdoor projects such as the facade of building, yacht, bridge and so on, for its waterproof and UV and saltwater resistant. Different IP rating connectors are available for various applications.



Aluminum Profile
 Article No. LJLAC012-AP
 Dimension: 1000x14.4x21.4mm / 39.37"x0.57"x0.84" (L x W x H)
 Material: aluminum
 Color: silver



IP67 Connector 4Pin
 Article No. LJLAD001-4
 Wire gauge: 0.519mm²/20AWG
 Protection: IP67(Mated)
 Mechanical operation: > 500 mating cycles



Curved Profile
 Article No. LJLAC009-CR
 Dimension: 1000x26.4x18mm / 39.37"x1.04"x0.71" (L x W x H)
 Material: stainless steel
 Color: silver



IP68 Connector 5Pin
 Article No. LJLAD001-5
 Wire gauge: 1.0mm²/18AWG
 Protection: IP68 (Mated)
 Mechanical operation: > 500 mating cycles
 Contact: Brass, Gold plating
 Material of housing: PA



Mounting Clips
 Article No. LJLAC009-SET
 Dimension 15x13.8x12.8mm / 0.59"x0.54"x 0.5" (L x W x H)
 Material: stainless steel
 Color: silver
 Each meter of LED strip needs 3 clips + 3 screws + 2 end caps



IP68 2Pin 2Ways
 Article No. LJLAD004-2
 Wire gauge: 1.0mm²/18AWG
 Protection: IP68(Mated)
 Mechanical operation: > 500 mating cycles
 Contact: Brass, Gold plating
 Material of housing: PA Mechanical operation: > 500 mating cycles
 Contact: Brass, Gold plating
 Material of housing: PA



Holding Clips
 Article No. LJLAC009-HC
 Dimension: 30.6x10x22.5mm/1.2"x0.39" x0.89" (L x W x H)
 Material: silicone
 Color: opal
 Each meter of LED strip needs 3 clips + 6 screws



IP68 2Pin 3Ways
 Article No. LJLAD004-3
 Wire gauge: 1.0mm²/18AWG
 Protection: IP68(Mated)
 Mechanical operation: > 500 mating cycles
 Contact: Brass, Gold plating
 Material of housing: PA Mechanical operation: > 500 mating cycles
 Contact: Brass, Gold plating
 Material of housing: PA



IP68 Connector 2Pin
 Article No. LJLAD001-2
 Wire gauge: 1.0mm²/18AWG
 Protection: IP68(Mated)
 Mechanical operation: > 500 mating cycles
 Contact: Brass, Gold plating
 Material of housing: PA



IP68 2Pin 4Ways
 Article No. LJLAD004-4
 Wire gauge: 1.0mm²/18AWG
 Protection: IP68(Mated)
 Mechanical operation: > 500 mating cycles
 Contact: Brass, Gold plating
 Material of housing: PA Mechanical operation: > 500 mating cycles
 Contact: Brass, Gold plating
 Material of housing: PA



IP68 Connector 3Pin
 Article No. LJLAD001-3
 Wire gauge: 1.0mm²/18AWG
 Protection: IP68(Mated)
 Mechanical operation: > 500 mating cycles
 Contact: Brass, Gold plating
 Material of housing: PA



IP68 2Pin 5Ways
 Article No. LJLAD004-5
 Wire gauge: 1.0mm²/18AWG
 Protection: IP68(Mated)
 Mechanical operation: > 500 mating cycles
 Contact: Brass, Gold plating
 Material of housing: PA Mechanical operation: > 500 mating cycles
 Contact: Brass, Gold plating
 Material of housing: PA